

An abstract painting by Barbara Rae, featuring a complex composition of layered colors and textures. The palette is dominated by various shades of blue, from deep indigo and violet to bright cyan and turquoise. Interspersed among these are patches of green, yellow, and earthy brown. The brushwork is visible and expressive, with thick applications of paint and some areas where the underlying layers are exposed, creating a sense of depth and movement. In the lower center, the word "LALA" is written in a simple, dark, hand-drawn font. The overall effect is one of vibrant energy and organic complexity.

BARBARA RAE

adam gallery



**a d a m** gallery

# BARBARA RAE RA

24 CORK STREET London W1S 3NJ t: 0207 439 6633

13 JOHN STREET Bath BA1 2JL t: 01225 480406

e: [info@adamgallery.com](mailto:info@adamgallery.com) [www.adamgallery.com](http://www.adamgallery.com)

## Barbara Rae CBE RA RSA RE

Adam Gallery is proud to present new work by Royal Academician, Scottish-born painter and printmaker, Barbara Rae.

For this exhibition she returns to a few of her favourite places in Ireland, France and Spain in search of the passing of time and how it erodes and alters what we see and sense. Whether abstract or near-abstract, her work remains quietly subversive, political in social subjects chosen, and luminously evocative of time and mood.

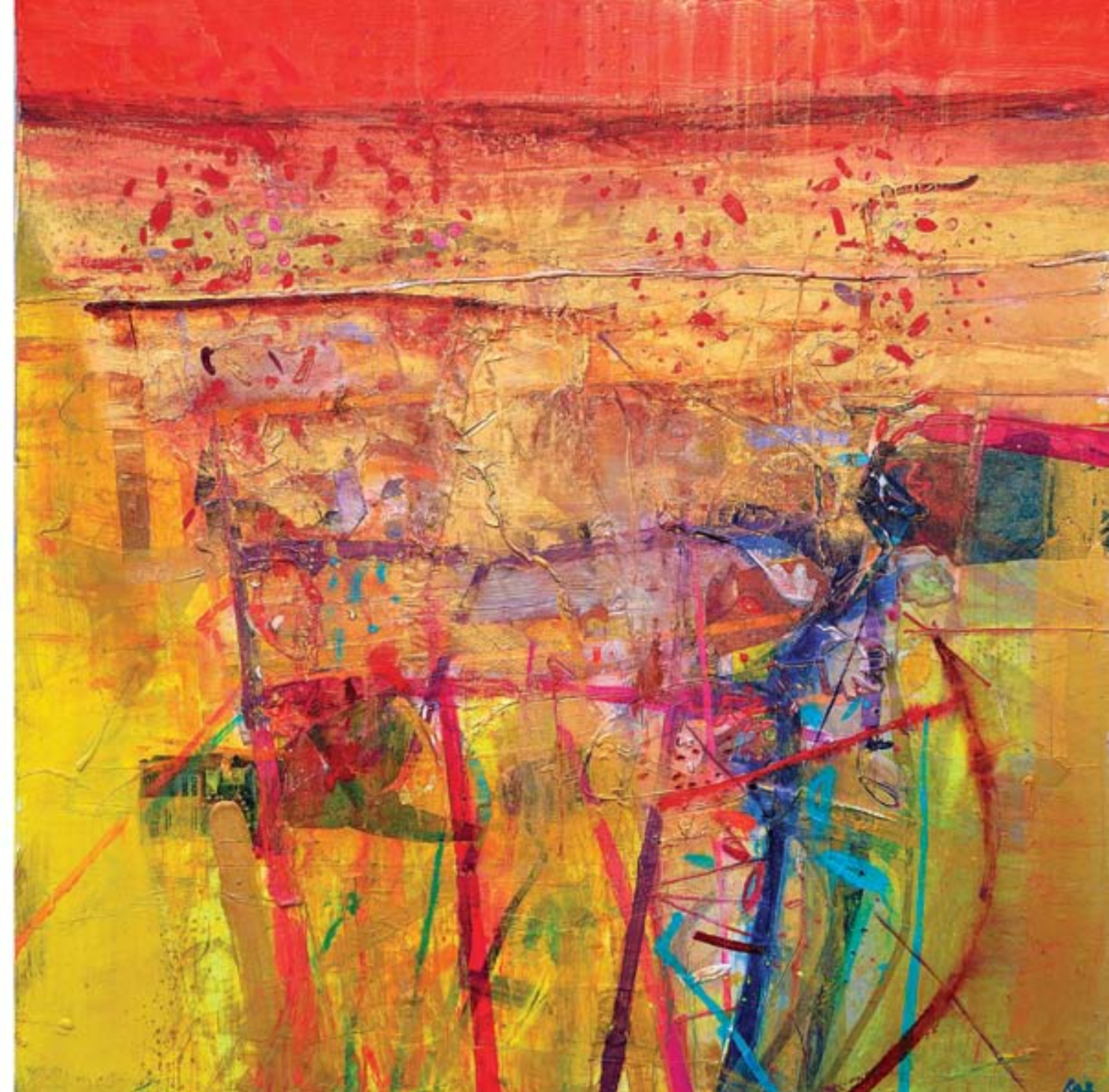
Rae spends weeks in one area among the people, studying their diverse ways and lives, searching out historic enclaves and artefacts that might make painterly images, experiencing the landscape in all weathers and light, before opening a sketch book to record general subject matter, form and pattern.

The small works are perfect capsules of objects and moments. The large works are powerful evocations of the hand of mankind on domestic buildings and the land. They are intense, passionate, lucid, and emotionally moving. They dissect what the rest of us see from a quick glance; they see what we overlook. Their physical presence is a wonderful assembly of vibrant colour and tactile surfaces – almost three dimensional.

Rae is a painter's painter. She leads by the strength of her vision, and by the sheer technical mastery of the materials she uses. She retains an apparent ease to create beauty from dissonance. She paints beyond the capability of the camera. Anybody moved to imitate her soon discovers her images are deceptively simple, her vocabulary of techniques extremely complicated. The eye is drawn to key objects and their relationship one to another, but unhurried observation discovers more and more half-hidden detail. In the rush to knock down fine art and supplant it with inert installations and 'ideas,' many of them bad, she is one of the few contemporary artists whose work attracts the distinction 'art and beauty' appended without irony.

Rae remains a master of her chosen material. It is honest, direct, and uplifting. In a world of consumerism and shallow fashion, she offers the enduring and the accessible, culture and life as art.

1. Winter Faverot  
mixed media on canvas 152 x 152 cm







2. Night Sky - Promontory  
mixed media on paper 13 x 20 cm

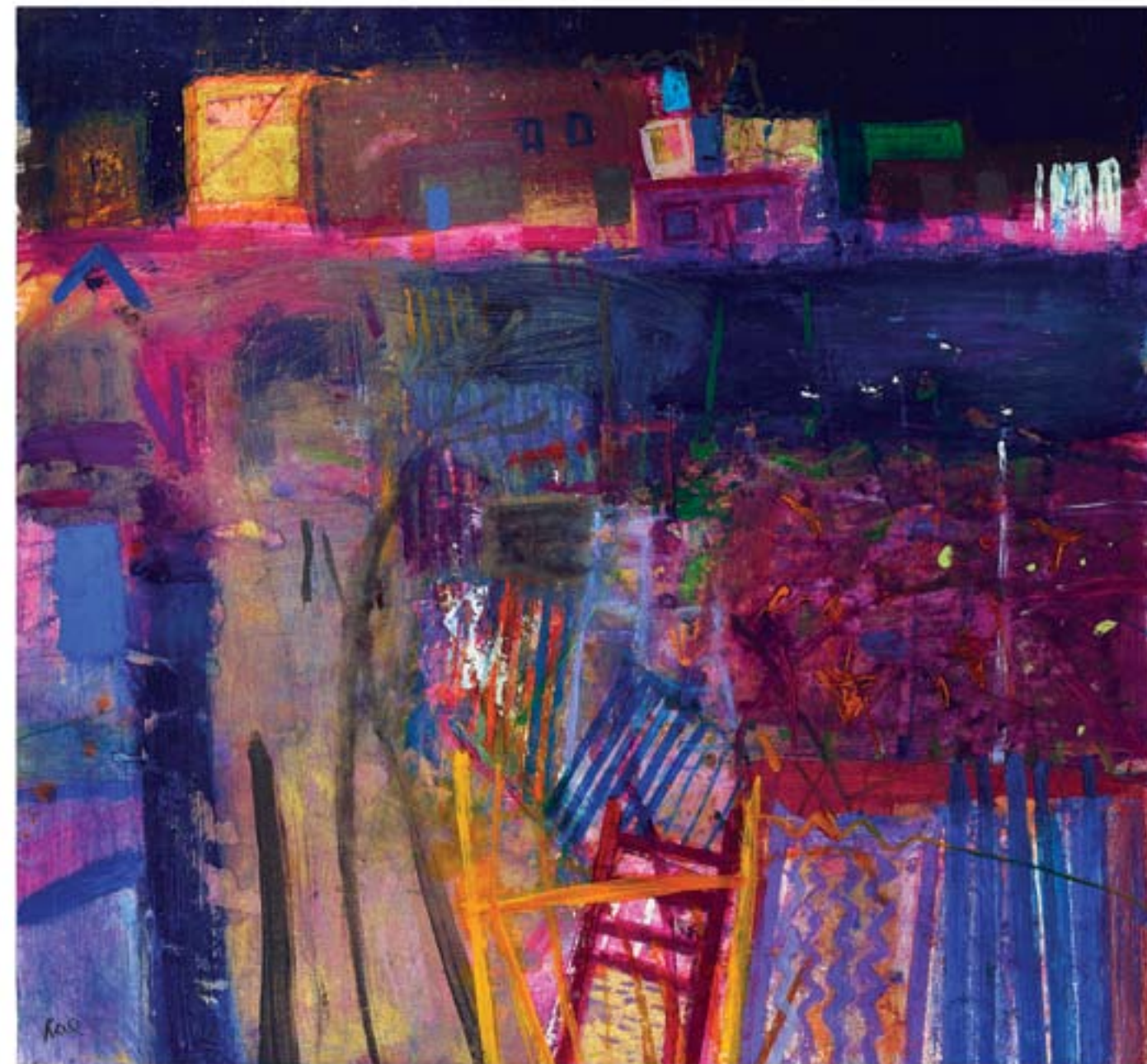


3. Montaione Ploughmarks  
mixed media on paper 70 x 83 cm





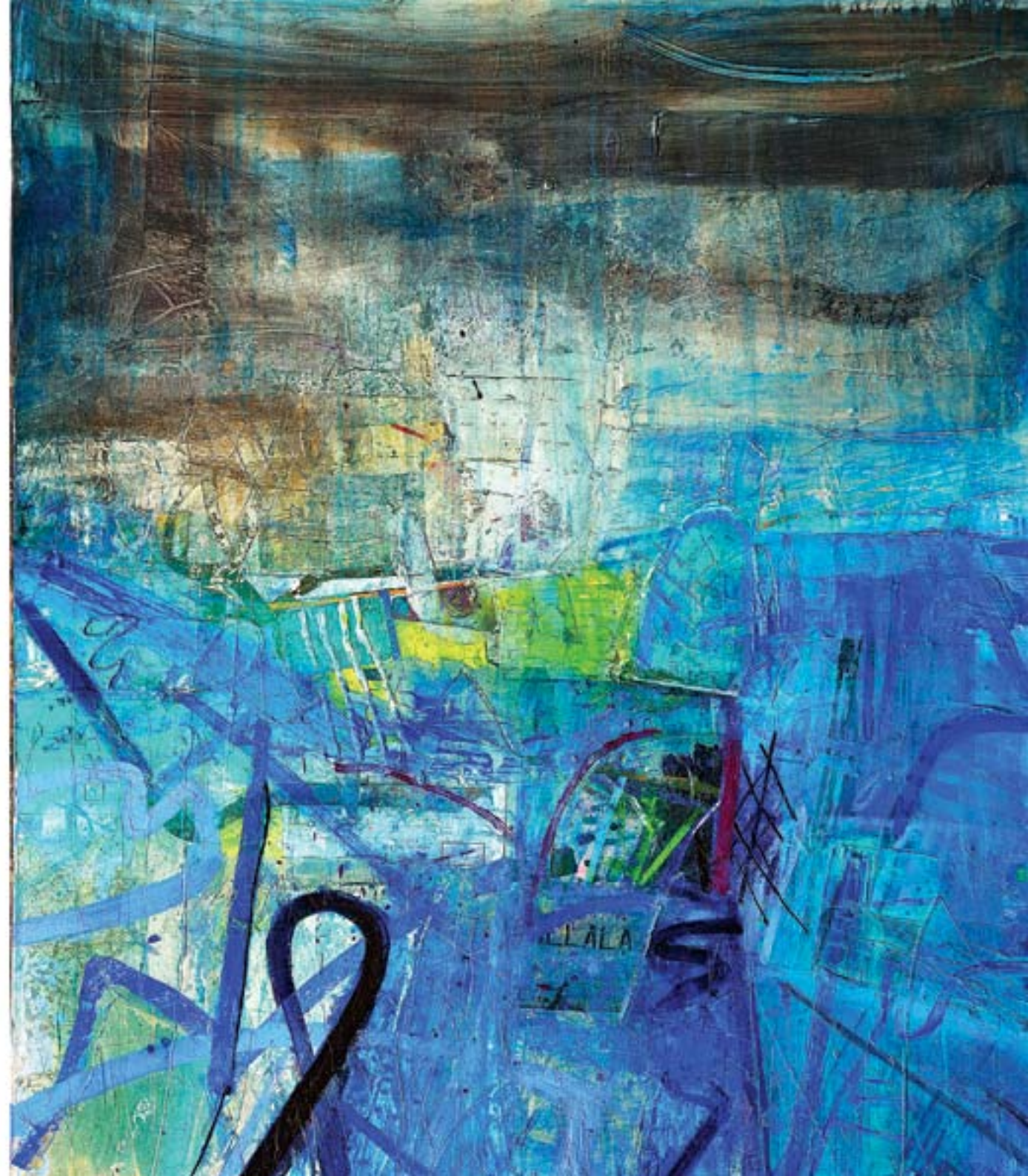
4. Yellow Headland  
mixed media on paper 13 x 20 cm



5. Allotments  
mixed media on paper 100 x 108 cm



6. Achill OS.22  
mixed media on canvas 214 x 183 cm







7. Dark Menerbes  
mixed media on paper 13.5 x 14.5 cm



8. San Stefano  
mixed media on paper 100 x 109 cm





9. Winter Maubec  
mixed media on paper 15 x 22 cm

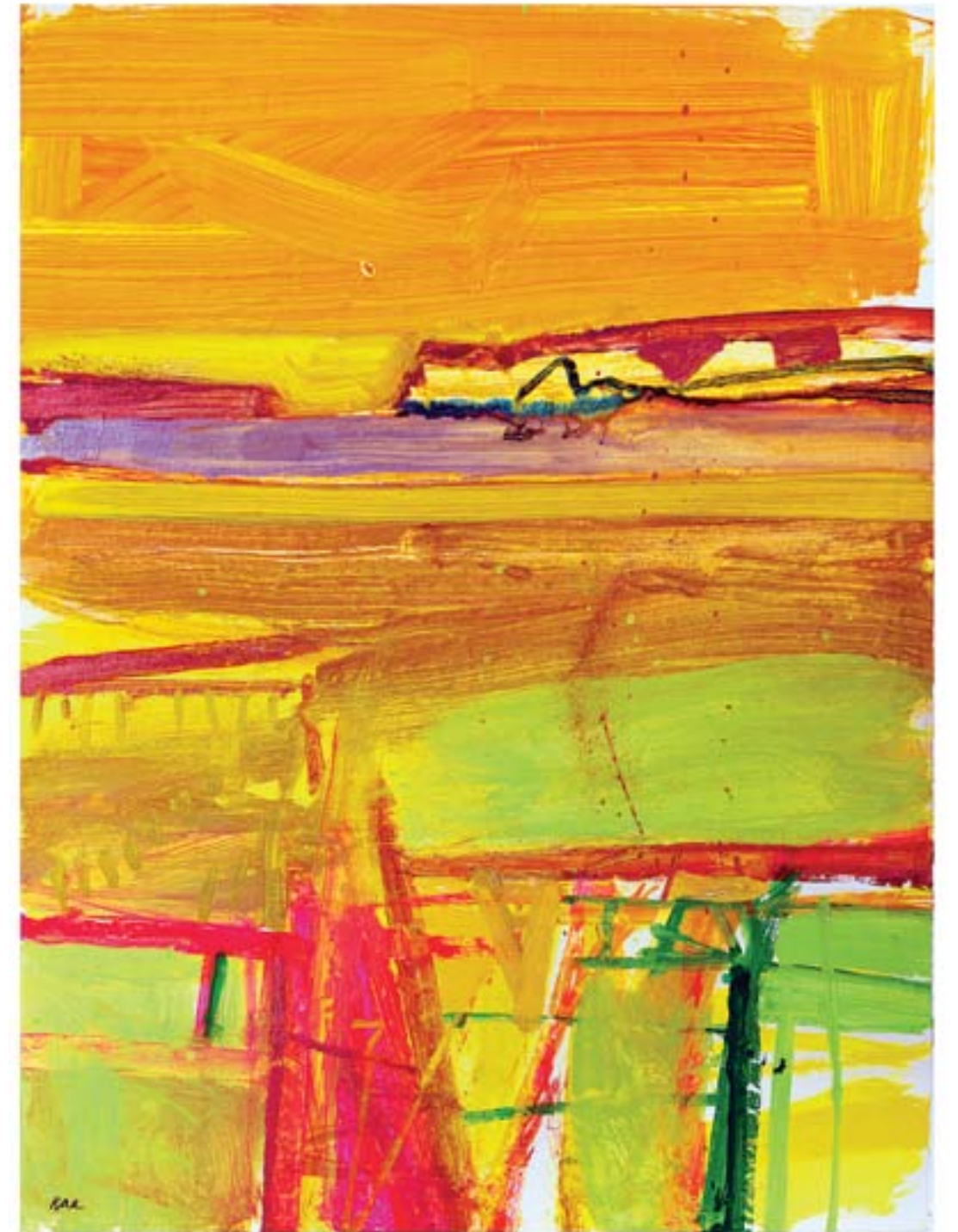


10. New Fence - Yellow Field  
mixed media on paper 57 x 63 cm





11. My Vineyard  
mixed media on paper 13.5 x 14.5 cm



12. Sun at Ceide  
mixed media on paper 105 x 78 cm



13. OS. 22  
mixed media on canvas 152 x 152 cm







14. Menerbes - Sun  
mixed media on paper 16.5 x 19.5 cm



15. Dun Briste - Old Fence  
mixed media on paper 86 x 131 cm





16. Volterra - Winter Field  
mixed media on paper 15.5 x 23.5 cm

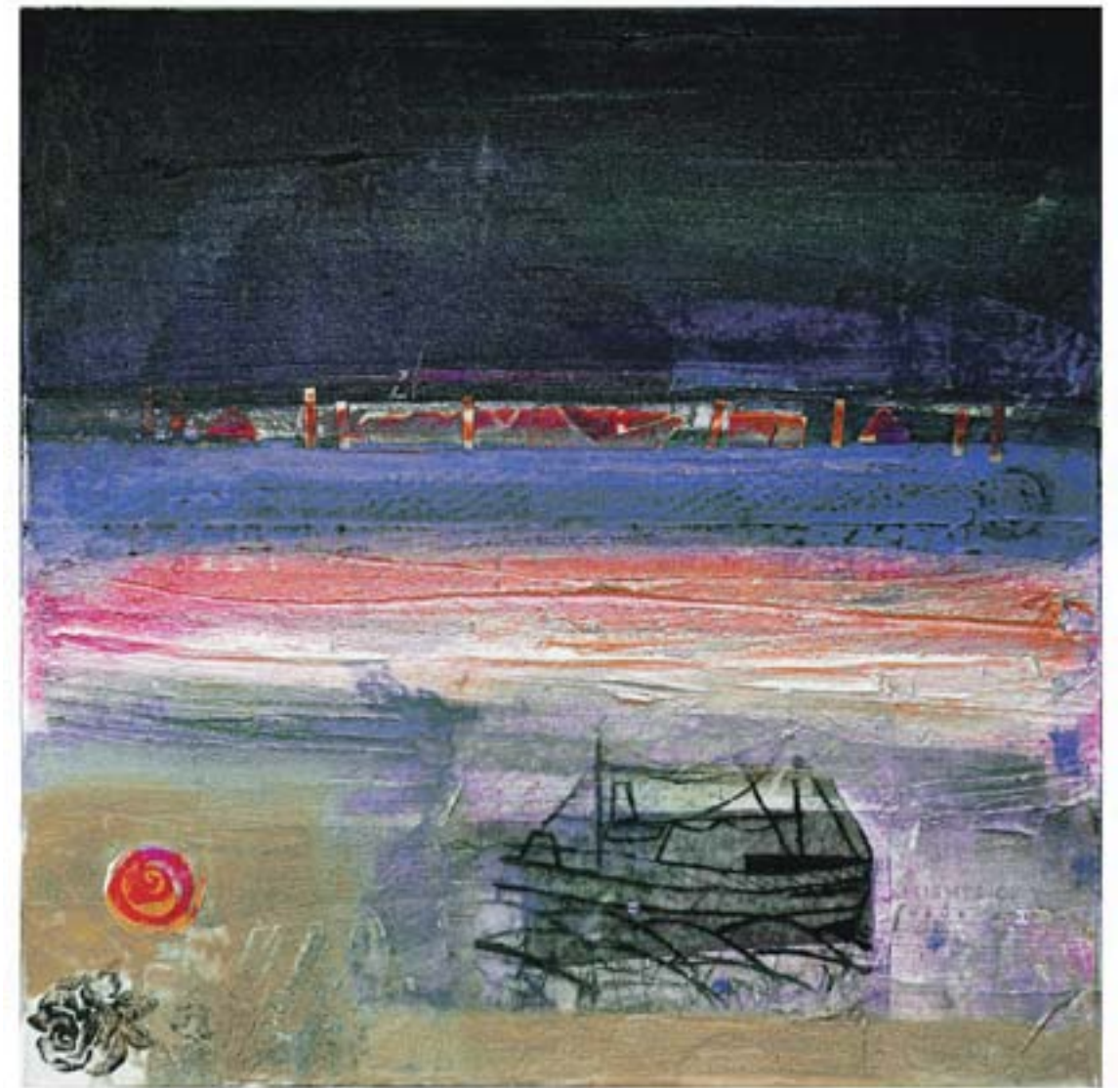


17. Plough Marks - San Stefarno  
mixed media on paper 100 x 103 cm





18. New Fence - Yellow Sky  
mixed media on paper 13 x 18 cm

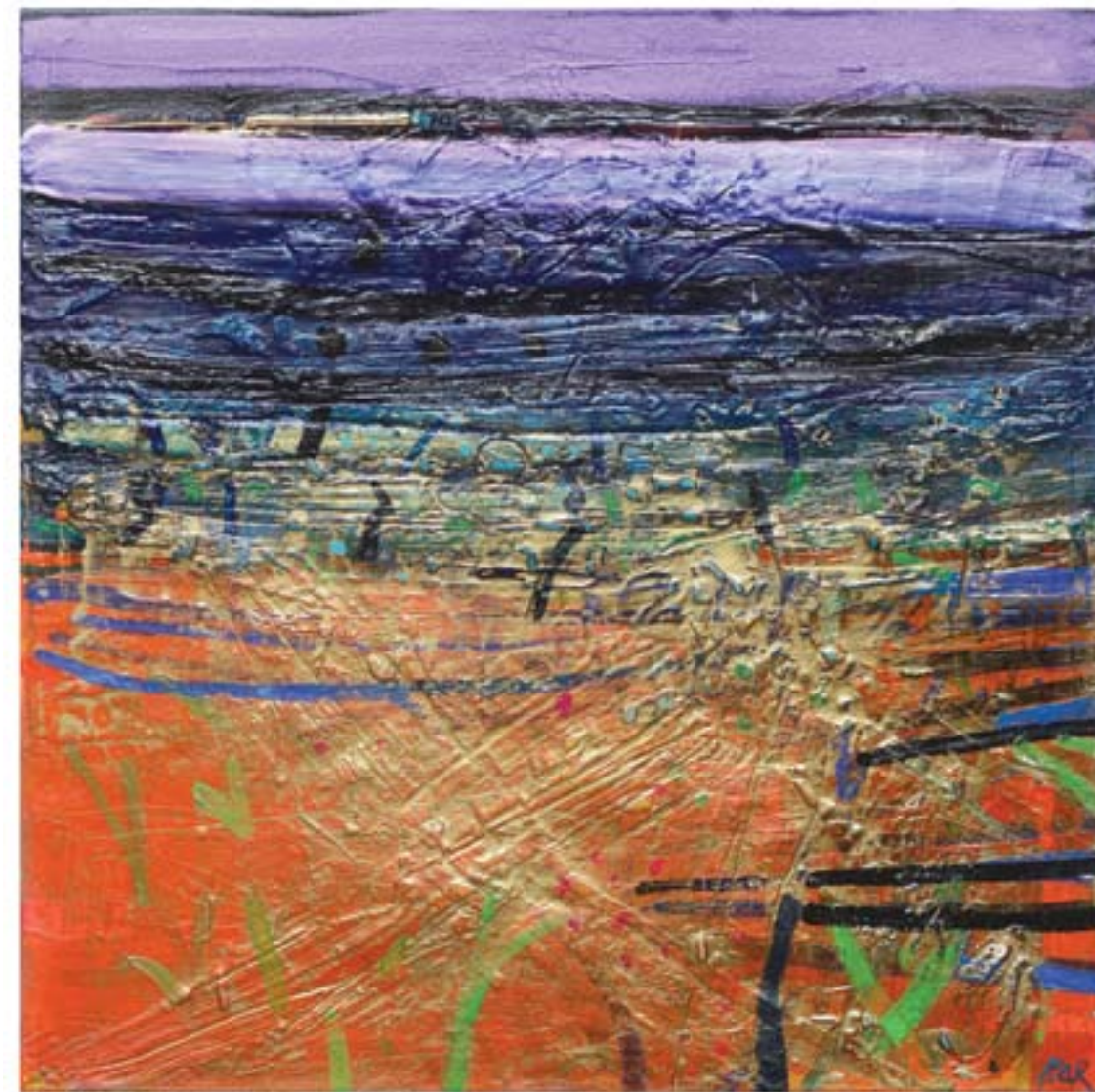


19. Inishkeas Memory  
mixed media on canvas 70 x 70 cm





20. Promontory  
mixed media on paper 15 x 19 cm



21. Blue Terrace  
mixed media on canvas 70 x 70 cm





22. Faverot Orchard  
mixed media on paper 15.5 x 20.5 cm



23. Passing San Stefano  
mixed media on paper 15 x 21 cm



24. Maubec - Gold Vineyard  
mixed media on paper 38 x 39 cm





25. Volterra Fields  
mixed media on paper 13 x 20 cm



26. New Year Vineyard  
mixed media on paper 14.5 x 14 cm



27. François Vineyard  
mixed media on paper 57 x 59 cm





28. Orchard - Menerbes  
mixed media on paper 16.5 x 18.5 cm



29. Easky - Seal Rock  
mixed media on paper 57 x 59 cm





30. Stubble - Volterra  
mixed media on paper 14 x 19.5 cm



31. San Stefano - Marks  
mixed media on paper 13 x 19 cm



32. The Yellow Shed - Allotment  
mixed media on paper 109 x 100 cm



Selected Awards		Professional Affiliations		Selected Solo Exhibitions			
1968	Arts Council England	1986	Art Panel, CNAA	1967	New 57 Gallery, Edinburgh	2004	New Paintings, Tom Caldwell Gallery, Belfast
1975–81	Major Scottish Arts Council Award	1986–90	Trustee, Arts Education Trust	1969	University of York	2005	Barbara Rae Monotypes, The Scottish Gallery
1977	Guthrie Medal, RSA		Member, RSW Council	1971	New 57 Gallery, Edinburgh	2006	New Paintings, Adam Gallery, London
1979	May Marshall Brown Award, RSW Centenary Exhibition	1991	Board of The Friends of the Royal Scottish Academy	1974	University of Aberdeen, Aberdeen Art Gallery	2008	New Small Paintings, Adam Gallery, London
1983	RSA, Sir William Gillies Travel Award	1992	Judge, Paisley Drawing Biennale	1975	Peterloo Gallery, Manchester	2009	Barbara Rae RA, Adam Gallery, London
	Calouste Gulbenkian Printmaking Award	1992–4	Member, Board of Friends of RSA	1976	Stirling Gallery, Stirling		'Vignettes' from Ireland, Adam Gallery, London
1989	Alexander Graham Munro, RSW		Member, Merchandise Committee, RSA		Greenock Arts Guild		Graphic Works, Adam Gallery, London
1999	Honorary Doctorate from Napier University, Edinburgh.	1993	Curator and Hanger, Royal Scottish Academy Student Exhibition	1977	Gilbert Parr Gallery, London	2010	Recent Paintings, Richmond Hill Gallery, London
1990	Hunting Group Prizewinner		Vice President (East) RSW	1978–9	University of Edinburgh		Barbara Rae RA: Prints, Sir Hugh Casson Room, Royal Academy, London
	The Scottish Post Office Board Award, RSA	1993–4	Curator and Hanger, Royal Scottish Academy Annual Exhibition	1979	The Scottish Gallery, Edinburgh	2011	'Celtic Connections' Adam Gallery, London
	The Scottish Amicable Award, RGI	1995	Appointed Member, Royal Fine Art Commission for Scotland	1983	The Scottish Gallery, Edinburgh		Celtic Connections: Invited Artist, Trinity Hall, Cambridge
	W. J. Burness Award, RSA	1996	Appointed Board of Trustees, Hospitalfield House, Arbroath, Scotland	1985	Wright Gallery, Dallas, Texas, USA	2012	Barbara Rae RA: Sketchbooks, Adam Gallery, London
2003	Honorary Doctorate from Aberdeen University			1986	Leinster Fine Art, London		Barbara Rae – Prints, Edingburgh International Arts Festival
	Honorary Fellowship from Royal College of Art, London			1987	The Scottish Gallery, Edinburgh	2013	New Works – Ireland and Spain, Adam Gallery, London
2008	Honorary Doctorate from St. Andrew's University				Glasgow Print Studio		New Paintings, Adam Gallery, London
Corporate Collections		Public Collections		1988	The Scottish Gallery, Edinburgh		
Bank of England		Arts Council of the Isle of Man		1989	Landmarks and Docklands, The Scottish Gallery, London		
Bank of Scotland		Aberdeen Art Gallery		1990	The Spanish Paintings, The Scottish Gallery, London		
Baring Asset Management, London		Birmingham City Art Gallery		1991	Perth Museum and Art Gallery		
British Rail		British Museum, London		1992	Earth Pattern, William Jackson Gallery, London		
BZW, London		City Arts Centre, Edinburgh		1993	The Reconstructed Landscape, Highland Regional Council,		
Daily Record, Glasgow		Contemporary Art Society, London			touring north Scotland		
Electra, London		Derby Museum and Art Gallery		1994	Théâtre Alexandre Dumas, Saint-Germain-en-Laye		
Lazards, London		Dundee Art Gallery			Art First, London		
Lazard Freres, London		Dundee University		1995	Barbara Rae, Edinburgh Festival Exhibition,		
Lloyds TSB Group plc, London		Edinburgh City Schools Collection			The Scottish Gallery, Edinburgh		
MacRoberts, Glasgow		Edinburgh Festival Theatre			Jorgensen Fine Art, Dublin, Ireland.		
Merchant Bank, Basle		Fleming Wyfold Art Foundation		1996	Art First, London		
Robert Fleming Holdings Ltd, London		Glasgow Museum			Waxlander Gallery, Santa Fe, New Mexico, USA		
Ross Harper & Murphy		Gracefield Arts Centre, Dumfries		1997	New Paintings (The South Africa Series), Art First, London		
Royal Bank of Scotland		Highland Regional Council			Graphic Works, Graphic Studio Gallery, Dublin.		
Scottish Life Assurance Company, London		Hunterian Art Gallery, University of Glasgow			Landscape Prints, Edinburgh Printmakers Workshop		
Sheraton Inns		Isle of Man Arts Council		1998	Lammermuir, The Scottish Gallery, Edinburgh		
SIBEC, Scotland		Kelvingrove Art Gallery and Museums, Glasgow			Edinburgh The Festival City, Galleri Galtung, Oslo 1999		
Stakis plc		Leeds City Education Department		1999	Painted Desert, Art First, London		
Standard Life		Lillie Art Gallery, Milngavie		2000	West, The Scottish Gallery, Edinburgh		
Trustees Savings Bank		McLaurin Art Gallery, Ayr		2001	Zuma Beach, Art First, London		
W. J. Burness & Co., Edinburgh		Museum of Art for Women, Washington DC		2002	Paintings from Ireland, Art First, London		
		New College, Cambridge		2003	Travelog, Glasgow Print Studio		
		Perth Museum and Art Gallery, Scotland			An-tiarthar – the West, The Scottish Gallery, Edinburgh		
		Scottish Arts Council					
		Scottish National Gallery of Modern Art, Edinburgh					
		Universities of Stirling, Edinburgh, Glasgow, Warwick, York, Aberdeen and St Andrews					
		Whitworth Art Gallery, Manchester					







