

An abstract artwork featuring a dark, textured blue background. In the lower half, there are vibrant, layered colors including magenta, pink, yellow, and green. On the left, there's a white area with green and blue brushstrokes. On the right, there's a white area with pink and blue brushstrokes. The overall style is expressive and painterly.

adam gallery

‘vignettes’

BARBARA RAE RA

vignette |vin'yet|

noun

1 a brief evocative description, account, or episode.

2 a small illustration or portrait photograph that fades into its background without a definite border.

DERIVATIVES

vignettist |-'yetist| |vm'jədəst| noun

ORIGIN late Middle English (sense 2; also as an architectural term denoting a carved representation of a vine):

from French, diminutive of *vigne* 'vine.'

a d a m gallery

‘vignettes’ from Ireland

BARBARA RAE RA

24 CORK STREET London W1S 3NJ t: 0207 439 6633

13 JOHN STREET Bath BA1 2JL t: 01225 480406

e: info@adamgallery.com www.adamgallery.com

During the winter of last year, Barbara Rae spent her time in the south of Ireland, remaking her annual pilgrimage to County Mayo; and on a separate trip, to Cork to stay a month in a cottage just outside a village called Macroom. She was met by terrible weather and so ventured north to Port Magee, County Kerry in the hope of travelling to the Skellig Islands, a trip that on a previous visit had been impossible due to bad weather. Again the boat did not sail due to the ferocious wind and rain so instead she stayed on the mainland, making visits to Valentia Island (across the bridge) and a short drive away to St Finian's bay overlooking the Skelligs Rocks and out across the wild Atlantic Ocean.

Due to the fickle Irish weather, Barbara was unable to paint as she wished, and returned to the studio in Macroom. The light not being good enough to embark on any major full size paintings, she concentrated instead on small-scale works, enjoying the intimacy, solitude and peace of the area. She captured short, impressionistic scenes that focus on a moment. Her 'vignettes' are the equivalent of a photographic snapshot, and relate to a 'sensorial' description of her surrounding environment. The titles of her work are annotations of places, colours, light and atmospheric conditions: 'Red St Finians', 'Dark Achill', 'Storm over Skelligs I'.

Studies for the Achill paintings are from the Belmullet peninsula in County Mayo, one of Rae's favourite spots visited every year, where she also visits and paints the Ceide Fields prehistoric site outside Ballycastle. The horizon on the coast is so open you can see every shade of blue; the deep turquoise of the water merging into powder blue as it touches the horizon, and in the distance the blue-violet mountains rising from the ocean.



1. Western Beach mixed media on handmade paper 10.6 x 16 cm



2. Wet St. Finian's mixed media on handmade paper 11.2 x 15.2 cm



3. Carrowtiege Division mixed media on handmade paper 11.4 x 16.4 cm



4. Stone Beach mixed media on handmade paper 11 x 15.6 cm



5. Storm Sea - St. Finian's mixed media on handmade paper 10.6 x 15.7 cm



6. Red St. Finian's mixed media on handmade paper 10.6 x 14.8 cm



7. Valentia Opening mixed media on handmade paper 10.7 x 15 cm



8. Tied Boats mixed media on handmade paper 10.5 x 15 cm



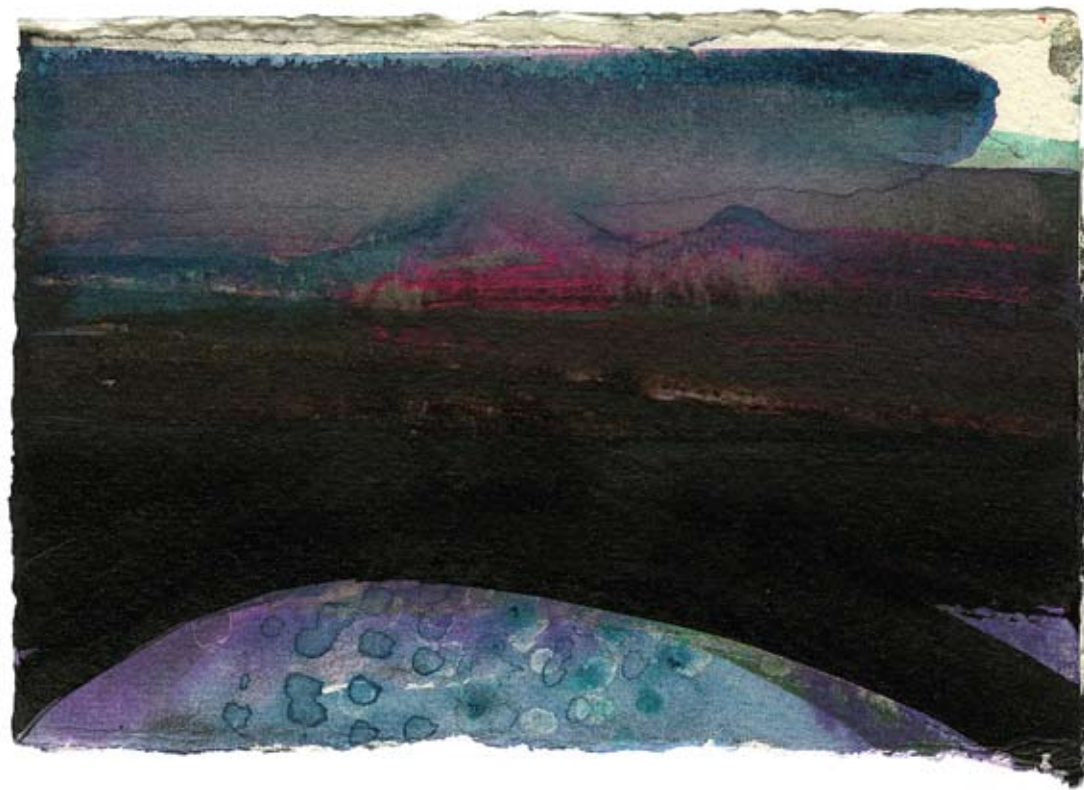
9. High Moor mixed media on handmade paper 11 x 15.6 cm



10. Beached mixed media on handmade paper 11.3 x 15 cm



11. St. Finian's Bay and Skelligs mixed media on handmade paper 10.3 x 15.3 cm



12. Moonlit Raised Beach mixed media on handmade paper 11 x 15.8 cm



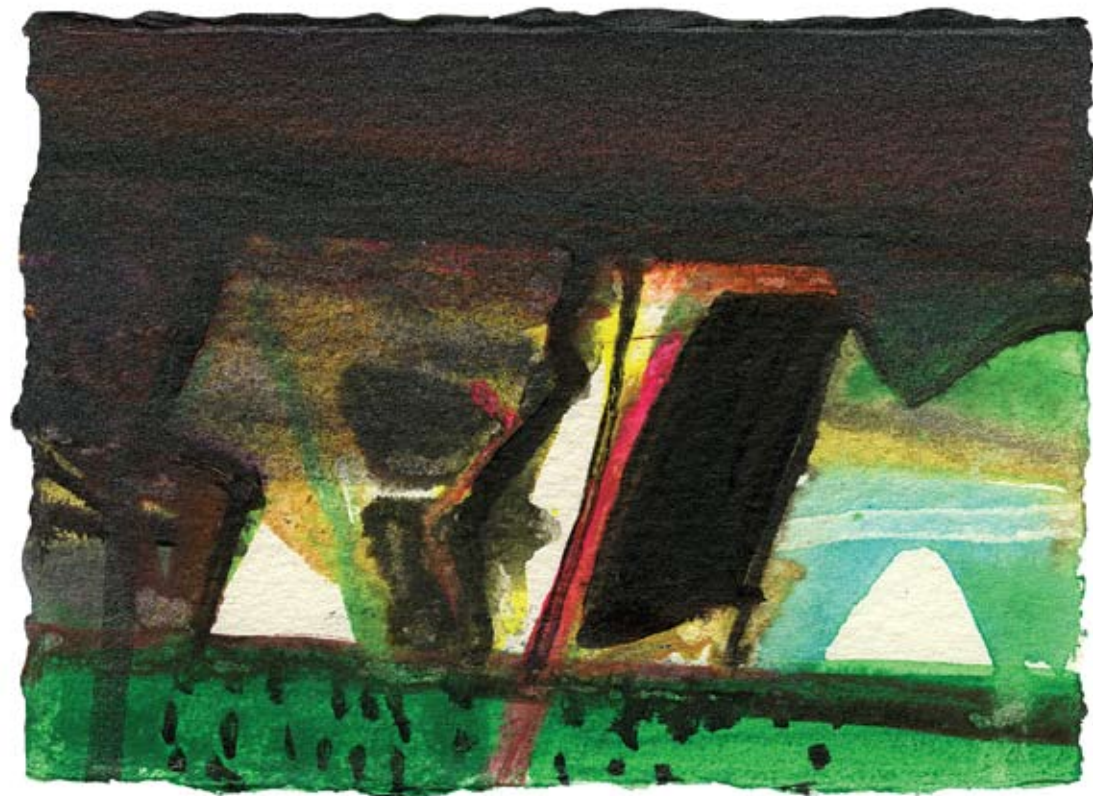
13. Skellig Distant mixed media on handmade paper 10.6 x 16 cm



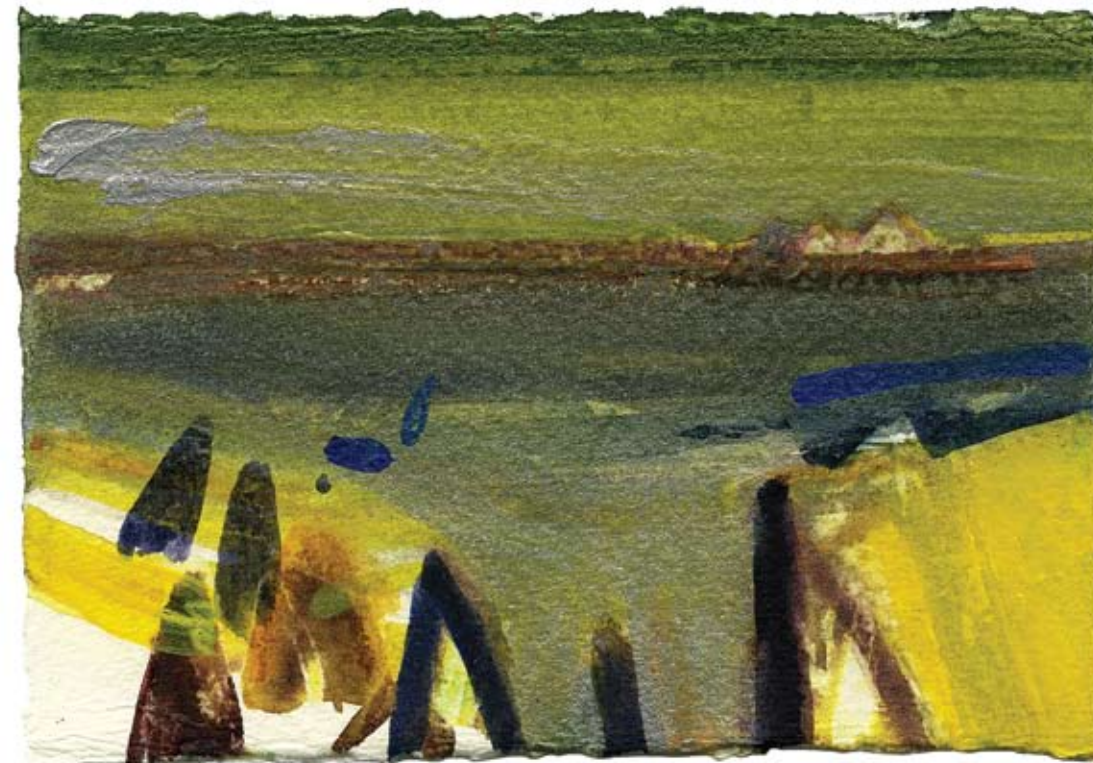
14. West Coast mixed media on handmade paper 11 x 15.6 cm



15. Edge - Skull mixed media on handmade paper 10.7 x 15.5 cm



16. Valentia mixed media on handmade paper 11 x 14.8 cm



17. St. Finian's Bay mixed media on handmade paper 10.6 x 15.5 cm



18. Storm over Skelligs mixed media on handmade paper 11.6 x 16 cm



19. Low Tide mixed media on handmade paper 10.8 x 15.7 cm



20. Inlet mixed media on handmade paper 11 x 16 cm



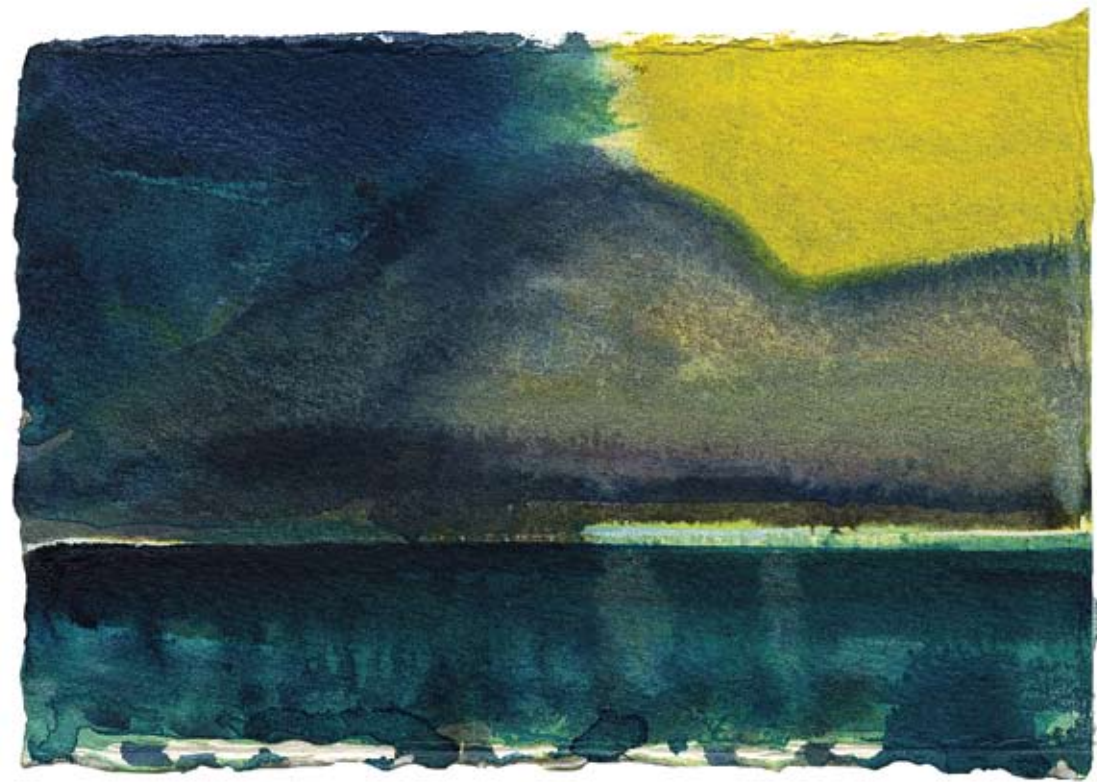
21. Ceide - Winter Darkness mixed media on handmade paper 11.7 x 16 cm



22. Storm over Slievemore mixed media on handmade paper 10.8 x 15.5 cm



23. Storm over Skelligs mixed media on handmade paper 11.6 x 16 cm



24. Dark Achill mixed media on handmade paper 10.6 x 15.4 cm

SELECTED PUBLIC COLLECTIONS:

Aberdeen Art Gallery
 Birmingham City Art Gallery
 British Museum, London
 City Arts Centre, Edinburgh
 Contemporary Arts Society, London
 Derby Museum and Art Gallery
 Dundee Art Gallery
 Dundee University
 Fleming Wyfold Art Foundation
 Highland Regional Council
 Hunterian Art Gallery, University of Glasgow
 Isle of Man Arts Council
 Kelvingrove Art Gallery and Museums, Glasgow
 Leeds City Education Department
 Museum of Art for Woman, Washington DC, USA
 Perth Art Gallery and Museum
 Royal Bank of Scotland
 Standard Life
 Scottish National Gallery of Modern Art, Edinburgh
 The Scottish Office, Edinburgh
 University of Edinburgh
 University of Glasgow
 University of York
 Whiworth Art Gallery, Manchester





